

GoodWorkCo.
established 1956

www.goodworkco.com

GoodWorkCo.

established 1956

www.goodworkco.com

PHARMACEUTICAL



PHARMACEUTICAL

Pharma Industry has a vast array of requirements. From a bulk information to squeeze in a limited amount of surface area to security features upon labels for anti infringement. Our pharmaceutical labels are used for a variety of applications. From braille to hanging labels, even multi labels help utilize multiple layers of information within a limited surface area. Clients can avail these products in different shapes, sizes, colors and designs.



PHARMACEUTICAL

Pharmaceutical & nutraceutical products provide more challenges to the label industry than almost any other label user market, both in terms of the wide range of applications and the solutions required. The requirements are very demanding in terms of print quality, reproducibility, color consistency and Rigorous quality control procedures. While drug counterfeiting is a major issue faced in India. Our facility is prepped to add a variety of measure to safe guard your products. Using one or more authentication technologies such as color shifting inks, holograms and taggants is an important anti-counterfeiting tool.



PHARMACEUTICAL

GWC has been successfully meeting these requirements. Our ISO 9001-2008 procedures and inspections are in place, our equipment is specialized and our trained personnel follows the GMP guidelines. You can rest assured that your needs will be met to the highest standard of quality at which we hold our products.

MULTILABEL



PHARMACEUTICAL

Label with Hologram



PHARMACEUTICAL

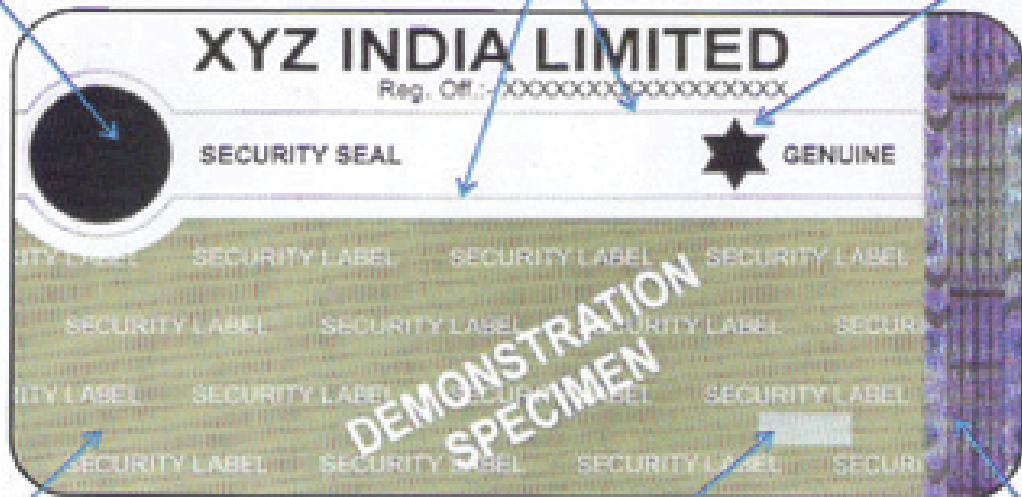
WWW.GOODWORKCO.COM

Multiple Security

COLOUR SHIFT
IMAGE (Brown / Green)

MICRO TEXT

MACHINE
READABLE IMAGE



BI-FLUORESCENT
IMAGE

THERMOCHROMIC
PRINT (Blue / Colourless)

HOLOGRAM

PHARMACEUTICAL

Label with microtext



PHARMACEUTICAL

Braille Label



PHARMACEUTICAL

Braille labels make the simple things so much easier for the visually impaired. Basic medication administration shouldn't require constant dependency therefore braille was introduced to the pharma industry.

Braille Label in
mono cartons



PHARMACEUTICAL

WWW.GOODWORKCO.COM